



CONQUERING **CHANGE**

2015-2016
Annual Report

OUR MISSION:

The Arc of Essex County provides comprehensive services and supports to individuals with intellectual and developmental disabilities and their families ensuring a lifetime of achievement with dignity and full partnership in the community.



A Letter from the CEO and Board President

Dear Friends and Members of The Arc Family,

Imagine capturing the mission of The Arc of Essex County in one word. Which word would you choose – support, acceptance, achievement? The options are endless, yet it takes an undercurrent of change to make them all work.

The Arc of Essex County was founded on the promise of change, and nearly 67 years after our inception it is a constant in everything we do. Our success is measured by our ability to adapt, respond, and innovate as our landscape shifts. Based on these metrics, The Arc of Essex County conquered change in Fiscal Year 2015-2016.

How? After nearly four years of preparation, our first adults moved into the state's fee-for-service system with The Arc's guidance and support. These adults experienced seamless transitions that you have come to know and expect from The Arc. And, when the Children's System of Care unexpectedly accelerated their own fee-for-service initiatives, we quickly adjusted and responded, continuing to support the children and families in our respite programs – again, without service interruption.

We know this shift has created uncertainties for the individuals and families we serve. However, The Arc of Essex County's systems, infrastructure, and staff have been tested time and again, and our experience and preparedness are instrumental in ensuring service continuity. As more individuals and families begin their transition, we are ready.

Our planning and preparation in the face of monumental funding changes has positioned The Arc as a leader in the fee-for-service transition. While many other agencies are focusing solely on this transition, The Arc of Essex County is looking to innovate in all areas. As our population and their needs change, we are examining and implementing accessibility and aging-in-place standards modeled after our latest group home in Roseland; expanding specialized day habilitation services such as our Bridges Day Program; and reinvesting in Camp Hope so its recreational spaces meet our campers needs for the next 60 years.

While change can be difficult, it is also necessary and exciting. As this fiscal year comes to a close, we look forward to driving change in the future and celebrating achievements along the way. Your renewed support ensures The Arc of Essex County can continue to be a champion on behalf of the individuals and families we serve.

Thank you for your confidence in all we hope to achieve.

Sincerely,



Linda C. Lucas
Chief Executive Officer



Brad K. Hopton
Board President

Fee-For-Service: Rising to Change

In 2012 the State of New Jersey began shifting Division of Developmental Disabilities funding from a contract-based system to a fee-for-service model. For individuals with intellectual and developmental disabilities, these changes mean additional flexibility and choice. For agencies, the transition requires a fundamental change in administrative processes and how services are provided. The Arc of Essex County embraced this change and quickly evolved to meet the new requirements.

Committed to minimizing the impact on individuals and their families, The Arc of Essex County became Medicaid approved, invested in electronic health record software and mobile technology, examined current services to ensure they meet new state requirements, advocated for reasonable state-assigned rates, established new operating procedures, and extended professional support services to guide families through the steps they would need to take.

Throughout the year, The Arc fielded more than 500 information and resource phone calls, provided nearly 100 day program tours, and coordinated self-directed and transition services for more than 80 individuals and families.

“The Arc of Essex County is moving forward with a person-centered approach as the State of New Jersey continues to roll out its fee-for-service initiatives. The state-mandated changes require The Arc of Essex County to change how we operate; however, our mission and focus remain the same. We will continue to offer creative resources and opportunities to ensure the most fulfilling lives for the individuals and families we serve.”

- Linda Lucas, Chief Executive Officer, The Arc of Essex County

In June 2016, The Arc of Essex County’s first adults moved into the state’s fee-for service system. As The Arc intended, their transitions were seamless and they continued to receive the highest level of support. Behind the scenes, The Arc’s new technology and processes also experienced seamless communication with the state’s Medicaid billing provider.

As additional individuals and families begin their transition into the fee-for-service model, The Arc of Essex County is ready. Professional support services continue to be available and the new systems and infrastructure have withstood the test of time. With a solid foundation in place, the agency is focused on continuing to provide individuals with intellectual and developmental disabilities innovative activities and expanded opportunities.

While many agencies are suspending services in the face of monumental change and funding uncertainties, The Arc of Essex County is investing in programs and services. This commitment will continue to position The Arc as the premier service provider for individuals and their families across Northern New Jersey.



Two day program attendees steal a dance during The Arc of Essex County’s third annual Day Programs Prom at the Embassy Suites in Parsippany. Members of the community supported by donating Prom attire, flowers, and more.





Reimagining Camp Hope: A 60th Anniversary Celebration

Since 1956, Camp Hope has provided more than 8,000 children and adults with intellectual and developmental disabilities with an opportunity to experience traditional summer fun adapted to meet their needs. The Arc of Essex County used Camp Hope's 60th Anniversary as a springboard to celebrate the traditions established over the years and reimagine the possibilities for the future.

True to its roots, Camp Hope combines life skills, social, and recreational activities with aquatics, sports, music, and the arts to help campers tackle new goals, build confidence, and form lasting friendships. With two separate programs, children from five to 21 years old enjoy a traditional camp experience while individuals 21 years and older can return for the Adult Camp Experience. Parents have peace of mind knowing Camp Hope provides an appropriate and stimulating environment.

As The Arc imagined the future of Camp Hope, increasing the number of engaging, interactive, and accessible-friendly play spaces became a top priority. In early 2016 an ambitious capital campaign, Create Play, launched to build upon capital improvements that began in 2011 with the addition of a zero-entry pool. The goal was to reimagine, reinvest in, and revitalize Camp Hope and the grounds that have been the background for countless memories. The identified recreational improvements included a new open-air activity pavilion, an interactive and accessible playground, a splash pad aquatic feature, enhanced sports facilities, and general improvements to the camp's buildings and landscaping.

Following an exciting and interactive Camp Hope Challenge Week in early June and prior to the start of camp in July, a new basketball court



Workers from the Township of East Hanover donate their time to install a new basketball court in June 2016. With the addition of adjustable height backboards, the new court can provide years of fun for campers of various skill levels.

with adjustable height backboards was installed. Fundraising efforts and collaboration with the Township of East Hanover will continue through the remainder of 2016 with main phase construction beginning after the 2016 camp season.

The reimagined spaces will become a reality prior to the 2017 camp season and meet campers' needs for the next 60 years. Future generations will have the perfect backdrop for summers packed with joyful memories.



"The Create Play capital campaign will enable The Arc of Essex County to further elevate the summer camping experience for years to come. These improvements will allow all campers to participate fully in an interactive and accessible-friendly environment, which has always been at the heart of Camp Hope. We are excited to unveil a reimagined Camp Hope in 2017."

- Heather Comstock, Senior Director, Development and Communication, The Arc of Essex County

Welcome Home: An Evolving Approach to Residential Living

Dale Crews lived with The Arc of Essex County in the Nutley group home for nearly two decades. During that time, she bonded with her roommates and group home staff, and enjoyed participating as a member of her community. While the Nutley group home holds many memories, navigating the colonial-style property with her walker became increasingly challenging. Collectively Dale and The Arc recognized the need for a home that would meet her mobility needs now and in the future.

Inspired by Dale, and others like her, The Arc of Essex County embarked on a search for properties that could support current and future residents whose mobility needs may evolve. The beginning of the 2015-2016 Fiscal Year marked an opportunity to transform The Arc’s vision for future residential living into reality.

The Arc of Essex County purchased a ranch-style home in Roseland, NJ in June 2015. Over the next 11 months, the agency transformed the house’s original design to meet the needs of adults with intellectual and developmental disabilities in every phase of life. Utilizing funding from the Essex County Division of Housing and Community Development, the Borough of Roseland, and the New Jersey Division of Developmental Disabilities, The Arc added front/rear wheelchair ramping, converted the existing master bathroom to an accessible-friendly bathroom, and installed comprehensive lighting and fire suppression systems.

Dale and her roommates moved into the home in May 2016 and have been forming their own traditions and memories ever since.

The success of the renovation project emphasized the importance to create



Pictured (L-R) - Ben Proce, Trustee of The Arc of Essex County, John Duthie, Mayor of Roseland, Linda Lucas, CEO of The Arc of Essex County, Joe DiVincenzo, Essex County Executive and George Serio, Jr., Director of the Essex County Division of Housing and Community Development officially open the Roseland group home in May 2016.

long term housing stability for individuals with intellectual and developmental disabilities. As The Arc moves forward in its residential endeavors, the agency embraces the responsibility to anticipate and respond to residents’ needs. The Arc will continue to make needed accessibility improvements to existing properties, while searching to acquire new homes with living space all on one level.

With a focus on responding to the community’s needs, The Arc of Essex County is creating flexible housing options. Residents and their families can be confident in The Arc’s ability to innovate and adapt now, and in the future.



“As we look to acquire and renovate additional residential properties, being able to meet evolving service and mobility needs is a top priority. Ranch-style homes offer our residents living space on one level which is important as they enter their senior years. Additionally, for those with mobility needs, interior and exterior modifications further enable our residents to live comfortably in all phases of life.”

**- Frank Cinque, Senior Director, Asset Management,
The Arc of Essex County**





Parent-2-Parent: Where Families Come First

The Arc of Essex County’s Parent-2-Parent program serves new and expectant mothers and fathers welcoming children with Down syndrome into the world. Since the program’s founding nearly 40 years ago, countless families have begun their journey raising a child with special needs with a call to The Arc.

Upon receiving a diagnosis, doctors, nurses, and social workers provide an introduction to the Parent-2-Parent program. Employees and trained parent volunteers of The Arc of Essex County are available for families on a moments notice to provide emotional support, resources, and a lifeline to other families who have embraced the experience of raising a child with special needs.

The bonds formed between parents, children, and families during the Parent-2-Parent program often last a lifetime, and, since its inception, nearly 300 families have benefitted. The Arc’s focus on serving the needs of the entire family do not end with the Parent-2-Parent program.

At six-weeks old children typically begin receiving early intervention services in a home or day care setting of their parent’s choice through the state’s

early intervention system. Many Parent-2-Parent families and others, will also supplement these early intervention services by participating in The Arc’s Stepping Stones Early Intervention program. Stepping Stones teaches parents how to advocate for their child and prepares the whole family for the transitions to come. It is the only program in the state offering parent support groups, center-based therapies, and a formal, individualized development curriculum especially for children with Down syndrome.

This individualized development plan coupled with a focus on supporting the entire family provides children and parents with the foundations they need to succeed. The vast majority of school districts note Stepping Stones graduates are better prepared academically, physically, and socially. And, the bonds formed between participating families are cited as the most valuable aspect of the program.

The Arc’s family-first commitment begins on day one and families can be assured knowing a supportive hand and lifelong resource will be available for years to come.



A child enrolled in Stepping Stones Early Intervention Step II works with a volunteer to build muscle tone.



“The Parent-2-Parent program provides vital emotional support and mentorship to families during a time filled with questions and uncertainty. This family focus continues through the Stepping Stones Early Intervention program where parents and children bond with their peers, receive customized therapies, and build the foundation for a bright future.”

- Kathy Hinnigan-Cohen, Chief Operating Officer,
The Arc of Essex County

Quality Assurance: The Arc’s Ongoing Commitment to Innovation and Improvement



An attendee of the Arc company day program earns a paycheck working twice a week at the Goodwill in Rockaway. The Arc’s vocational day programs enable individuals with I/DD to achieve social and economic inclusion through sustainable employment.

The Arc of Essex County was founded in 1948 by a group of dedicated parents and community leaders seeking greater opportunities and cultural acceptance for individuals with intellectual and developmental disabilities (I/DD). While The Arc has made great strides since its inception, the agency continues to create new opportunities and increase community acceptance enabling individuals with I/DD to live fuller, more independent lives as engaged citizens in their communities.

Woven into the core of every program and service provided by The Arc are checks and balances to ensure day program attendees and residents have the highest quality of life. These Quality Assurance practices, implemented by members of The Arc of Essex County’s Board of Directors and staff, enable the agency to continue evolving to meet the community’s needs and innovating in the face of change.

In Fiscal Year 2015-2016, The Arc of Essex County’s Quality Assurance department expanded its approach to include greater involvement from individuals’ guardians and families resulting in more balanced oversight. Throughout the year, members of The Arc’s management team and Board of Directors toured and evaluated each program and community residence developing a plan of action to enact positive change for program attendees and residents.

“The Arc of Essex County’s Quality Assurance program upholds our commitment and responsibility to continue innovating on behalf of individuals with I/DD and their families. This program not only helps us improve the day program and residential experience, but also helps the agency prioritize strategic improvements so we can elevate our best practices and evolve for the future.”

- Erin Koropsak, Senior Director, Quality Assurance, The Arc of Essex County

During these annual reviews, the human resources, information technology, transportation, maintenance, residential, and adult day departments report on the status of staff training, vehicle maintenance, facility upkeep, and more. Concurrently, residents and day program attendees and their families are asked about their quality of life, participation in activity planning, and satisfaction levels. The feedback is analyzed and an action plan developed for each of the nearly 40 community residences and day programs.

The Quality Assurance program not only benefits day program attendees and residents, but also helps The Arc prioritize capital improvements and gathers valuable data needed when reporting to the Division of Developmental Disabilities (DDD). The Arc of Essex County has received glowing feedback from DDD’s residential licensing team on the quality of life, policies, procedures, and availability of records.

By involving every stakeholder in the Quality Assurance process, The Arc of Essex County is able to better identify strengths and areas of improvement and fulfill its responsibility to provide the highest quality programming that enables individuals to explore and experience new opportunities.



Quality Assurance Reviews Examine:

Quality Assurance & Families Review:

- Do attendees/residents like their house/day program?
- Are attendees/residents happy with their staff interaction?
- Do attendees/residents enjoy the planned activities?
- Are attendees/residents part of the activity planning process?
- Do residents like their housemates?
- Are prescriptions current and stored appropriately?

Board Members Review:

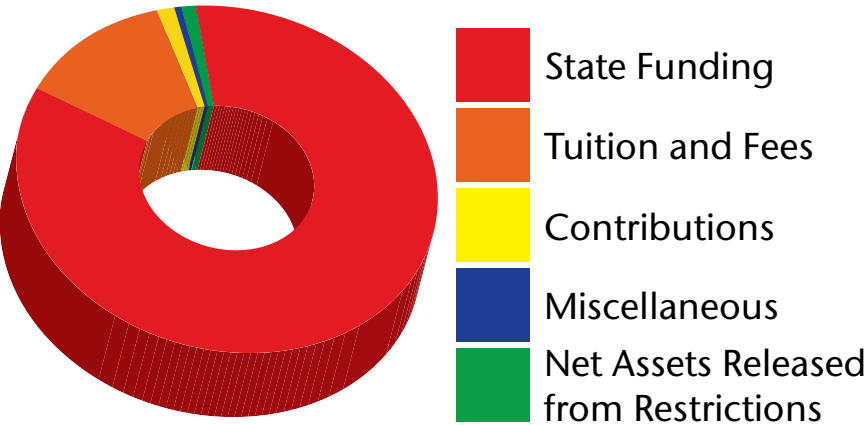
- Overall condition of the program/home?
- What is the culture between staff and residents?
- Recommendations to improve the program/home?

Internal Reviews:

- Human Resources
- Information Technology
- Transportation
- Maintenance/Facilities

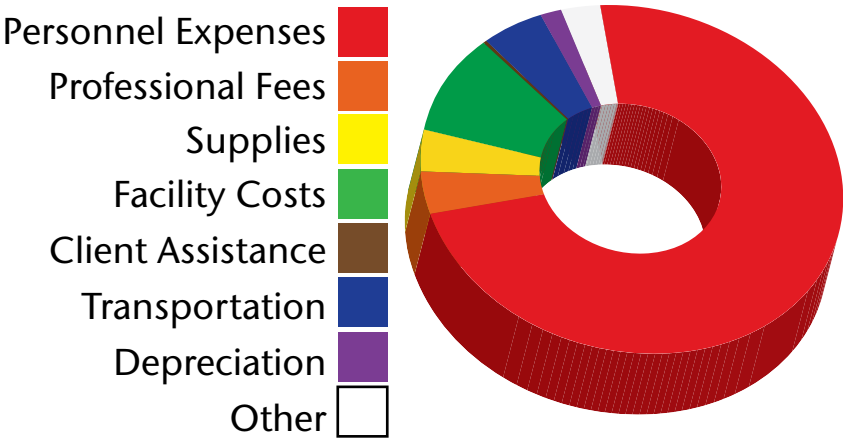
2015-2016 Financials

OPERATING REVENUE



\$25,922,616

OPERATING EXPENSES



\$25,537,254

YOUR IMPACT

“The Arc of Essex County has provided support and care over the past 18 years, not only to our son Joseph, but to my husband and me. The Arc was a lifeline of help in those early years. When The Arc came into our lives, we realized immediately that we were not alone.”

-Diane Pierce, Parent of a Teenager in The Arc of Essex County’s Agency-Hired Respite Program

YEAR in REVIEW

DEVELOPMENT

YOUR CONTRIBUTIONS IMPACT:

- 172 Education & Early Intervention
- 711 Service Navigation
- 108 Vocational Services
- 496 Respite Services
- 224 Recreation
- 301 Day Habilitation Services
- 146 Residential Services

NEARLY 1,500 INDIVIDUALS & FAMILIES

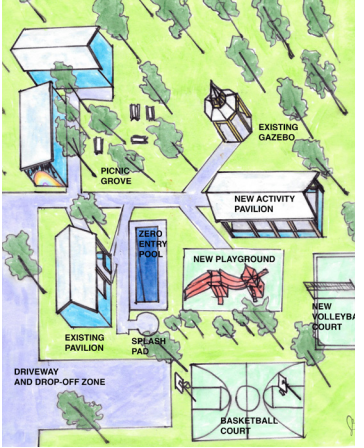
On Thursday, September 24, 2015 nearly 250 family, friends, and stakeholders of The Arc of Essex County attended the 2nd Annual Uncorked & Uncapped: Wine, Beer, and Food Fest at the Westminster Hotel in Livingston. Honoring the individuals and groups whose longstanding support and service has been integral to the agency’s success, the event raised nearly \$78,000.

Save the date! The 4th Annual Uncorked & Uncapped: Wine, Beer, and Food Fest returns to the Westminster Hotel on September 28, 2017!



The Arc of Essex County hosted its 18th Annual Building Tomorrows 5K Run, 2-Mile Walk, and Family Fun Fest on Saturday, April 16, 2016 in Bloomfield’s Brookdale Park. Attendees enjoyed pristine weather and a wealth of fun, food, and activities while raising more than \$63,000.

Save the date! The 2017 Building Tomorrows 5K Run, Family Walk, and Fun Fest moves to South Mountain Recreation Complex on April 29, 2017.



In early 2016, The Arc of Essex County launched the Camp Hope Create Play capital campaign to revitalize campground recreational spaces. At the end of the 2015-2016 Fiscal Year in June, the campaign had already raised \$84,500 with additional pledges from the Township of East Hanover to install a new, fully air conditioned building.

Fundraising for the Create Play capital campaign continues. To contribute, visit www.arcessex.org/createplay.

FISCAL YEAR 2015-2016

Guardians

These members of The Arc of Essex County family are distinctive supporters of the agency’s mission and objectives. Gifts and grants of \$25,000 or more in any one fiscal year show an abiding belief and confidence in The Arc of Essex County.

The Candle Lighters
The County of Essex, Division of Housing and Community Development
Township of Bloomfield, Department of Community Development

Benefactors

The following donors demonstrate a profound commitment to The Arc of Essex County, to its present and its future. Gifts and grants of \$10,000 to \$24,999 in any one fiscal year are the bedrock of the agency’s foundation and enable The Arc to remain a strong and innovative source of strength for individuals with intellectual and developmental disabilities.

Bird Pharma Consulting, LLC
Blanche and Irving Laurie Foundation
Township of Irvington, Office of Community Development and Planning
Orange Orphan Society

PricewaterhouseCoopers, LLP
PSE&G
Sax LLP
United Way of Northern New Jersey

Patrons

These gifts and grants of \$5,000 to \$9,999 ensure the continued fulfillment of The Arc of Essex County’s mission. We thank these donors for helping us provide the very best quality of service to our consumers.

Catholic Human Services Foundation
City of Newark, Department of Economic and Housing Development
Connell Foley, LLP

Jay Frank Parmly Trust
John and Margaret Post Foundation
Andrew Lacey
John Malcolm

Herbert Meyer
Oratory Preparatory School
The Ralph M. Cestone Foundation
Paul Wirth

Golden

We recognize these donors who have contributed between \$1,000 and \$4,999 in tribute to the more than 40 programs which The Arc of Essex County runs, so that the lives of those with intellectual and developmental disabilities living in Essex County and the surrounding area will be enhanced.

Benefit Management Solutions
Bogush Incorporated
Ronald Carr
CFS Certified Financial Services
Combined Computer Resources
Vincent Covello
Minerva Delgado
EdPowerment
EFO of Tempesta Docteroff Canale

Enterprise Fleet Management
ExxonMobil Foundation
Michael Franchino
Gallagher Bollinger
Glen Ridge Community Fund
Brad and Stephanie Hopton
Jonathan J. Proce Foundation
Knights of Columbus #1277
Knights of Columbus #6504

Knights of Columbus New Jersey State Council
Lillian Schenck Foundation
Brian Lowe
Linda C. Lucas
Madison Invalid Coach
Newark Public Radio - Jazz 88
Brett Nolan
Novartis Pharmaceuticals Corporation

DONOR
RECOGNITION
FY 2015-2016

Golden (continued)

John O’Brien
PrimePoint
Benjamin J. Proce, CPA
Prudential Financial

Stop & Shop Supermarkets, Inc.
TD Bank
TD Bank Affinity Program
Ulta Inc.

UNICO - West Essex
United Way of Bloomfield
Village Super Market, Inc.
Maryanne Vindici

Wakefern Food Corporation/ShopRite
John Wilson
Andrew Wu

Visionary

These members of The Arc of Essex County family contributed \$500 to \$999 in a single fiscal year. These funds allow us to build on our present successes to meet the needs of the future.

Applebee’s/Doherty Enterprises, Inc.
BC Tire
Fredric and Sheree Bennett
Arthur and Stephanie Blougouras
Lydia Church
ColorMyCar, Inc.
Minelly Cummings
Barbara Drumm
John Fryhoff
Grace - the Church On the Mount
Kathleen Hinnigan-Cohen
Bradford Huntington

Irene L. and Stephen L. Brotman Philanthropic Fund
Aisha Irvis
Alison Kibrick
Kings Food Markets
Robert Laurino
Herbert Lev
Peter Madonia
Tim McCormick
Mobility Works Commercial
Newark Motor & Export Corp.
North Jersey Smart Set
Howard Petruziello

R&R Maintenance
Jo-Ann Raines
Carmen Romano
Paul Rooney and Susan Comparato
Kenneth Sauter
Thomas Sheridan
Harry and Sandy Starrett
Syncora Guarantee Services Inc.
The Chlopak-Globokar Family Fund
Theresa Thompson
United Way Suncoast Tampa Bay Area

Angels

The donors whose gifts and grants range from \$250 to \$499 help us sustain and enrich our programs, while providing a nurturing atmosphere to all we serve.

Paul and Robin Alampi
Stuart Applebaum
Juan Arroyo
Gil Barbosa
Megan Beebe
Peter and Judy Bellina
Bruce Bird
BPOE South Orange Lodge #1154
Brach Eichler LLC
Lisa Cabrera
Chubb & Son
Heather Comstock
Costco Wholesale #200
Robert Costello
Carmen Della Pia

Ralph DiRuggiero
James Donnelly
Stephen Falanga
Scott Feingold
Juan Fernandez
Christine Fillimon
Rodney Frelinghuysen
Ki Hyun Han
Lorraine Hruby
John Jennings
Kiwanis Club of of Livingston
Joseph Kliminski
Paul Kwiatkoski
Maria Laurino
Steve Leon

Robert Leopold
Lucia Macaluso
Maser Consulting
The Honorable John McKeon
Ryan and Marnie McNany
David Merl
Manes Merritt
O’Donnell McCord, P.C.
Anthony Panza
Pfizer Foundation
Prudential Investments, LLC
PSEG Foundation
PSEG PAC Match Program
Ron and Lori Greschner Merry-Go-Round Foundation

Russikoff, LLC
Norman Scheer
Steve and Deborah Shulkowski
Jenn Spang
Richard Stauffer
Thomas Swartz
James Tengwall
Edward Tengwall
U.S. Financial Services, LLC
John Virden
Valerie Wieman
Anitra Wilson
Jonathan and Lisa Wolfe
Richard Wright

Supporters

We thank these wonderful donors who have made contributions of \$100 to \$249 to support our mission.

Advanced Polymer, Inc.	Luis DaCosta	Harry Horn	Tom Malcolm
Debra Anderson	Ray De Lorenzi	Eleanor Hufnagel	Marisca & Co.
David Aranowitz	Edward Dejong	James Hufnagel	Angela McCaffrey
Bryana Arlington	Zachary Demopoulos	Rebecca Hughes	Kevin McMillan
Edward Arnold	Doherty Enterprises, Inc.	Irene Hurtado	Tammy Morel
Chris Barsa	Palmo D’Uva	Diane Hutt	Marita Morgan
Harry Baumgartner	Susan Effgen	Albert Ianacone	Leon Morton
Lance Becker	Ellenoff Grossman & Schole LLP	William Iannacone	Jerome Mosley
Ruth Bedford	Kathleen Ellis	Paul Jemas	Gerard Murphy
Arthur and Lee Bergman	Angelo Facciponti	Johnson & Johnson	Maureen Murray
Mark and Betsy Bergman	Darin Fass	Susan Jones	My Limo
Anthony Bernardo Jr.	Jon Fass	Kim Jones	Peter Nigro
Joseph Bertolini	Douglas Faulkner	John Kalosy	Cynthia Norfleet
Laurie Best	Agostino Feola	Margaret Kane	North American Eagle
Ravinder Bhalla	Debra Ferraiolo	Alan Karp	Construction, LLC
Genovese Blume Donnelly	Pamela Ferrandino	Courtney Keemss	Cheryl Norton
BML Public Relations	Laura Friedman	George Keil	Walter O’Brien
Bob’s Discount Furniture	Emad Gabriel	Barbara Keil	Jennifer Oldja
Charitable Foundation	Matthew Garamone	Dale Kempf	Dawn O’Sullivan
Mark Bode	Judy Garland	Patricia Kenschaft	William Padalino
Richard Bonelli	Leland Gay	Kiwanis Club of Caldwell-	JoAnn Paganelli
Michael Boudjouk	Frank Gialanella	West Essex	Anthony Pastore
Martha Boyle	James Gilchrist	Mitchell Knapp	Brandon Pena
BPOE Livingston Lodge #1855	Bruce Gilson	Michael Kovach	Roger Philbrook
Anthony Braccioforte	Larry Glazer	Stephen Kowalski	Robert Picerni
Amy Brody	Cheryl Glory	Lakeland Bank	Rachel Posner
Eileen Butler	Lucille Goff	Mark Laney	Janet Prevette
Nancy Byrne	Juan Gonzalez	Gregory Lee	Chris Putt
Karen Casey	Douglas Goodrich	Jeremy Lees	Radhika Ramaswamy
Jamie Caufield	John Goodrich	Marvin Leiken	Erick Recinos
Susan Caufield	Joshua Gottfried	Ellen Lewis	Nicholas Rolli
Century Bathworks	Suzanne Greer	Regina Lombardi	Yolanda Rosario
Theresa Cifelli	Bernie Grieco	Steven London	Kevin Ryan
Laura Cilmi	Louis Gubitosa	Antonio Lopez	John Ryan
Frank Cinque	Susan Hagedorn	Richard Lopriore	Matthew Ryan
Bonita Coffey	Dematralius Hall	Willard Cavanaugh	Richard Sandler
Mark Corrado	Becky Halliwell	Dorothy Lukazik	Joseph Sauer
Lois Crawley	Jennifer Hamilton	Susan Lumpkin	Daniel Schorr
Curadoandponte LLC	Jeffrey Hess	Mary Lynch	Andrew Schwartz
John Curia	His & Her Electric Company	Anthony Mack	Seaboard Properties, LLC
Amy Cusack	Robert Holden	Joseph Mack	Arthur Shankman

Signature Property
Management, LLC
Eric Silvera
Melissa Sluberski
Feli Sola-Carter
Jacob Solomon
Marc Solomon
John Sordillo
Melissa Soules
Barbara Starr
Tara Stauber
Thomas Stier
Richard and Eileen Stuart
Paul Sullivan
Angelo Tamburri
Arthur Tanenbaum
Edward Tauss
Barbara Taylor
TDPD Enterprises
Mary Tenenbaum
Michele Tiger
Caryn Tiger Paillex
Jim Tosone
Mary Tranchetti
UNICO - Livingston
United Way of Central Jersey
United Way of Essex and
West Hudson
Jonathan Usdin
Manuel Velasquez
Mark Veniero
Robert Vignes
Larry Weinberger
Caroline Werner
Brooke Wiener
Willard Wilson
Cynthia Wronko
David Young
Mario Zichella



2015-2016 Executive & Advisory Boards

Officers

President	Brad K. Hopton
First Vice President	Marnie McNany
Second Vice President	Stephen Falanga
Third Vice President	Juan Arroyo
Secretary	John O’Brien
Treasurer	Gary Russikoff, CPA
Immediate Past President	Bruce Bird, Ph.D.

Trustees

Robin Alampi	Herbert Lev	Benjamin J. Proce, CPA
Robert Costello	Brian Lowe	Jo-Ann Raines
Bradford Huntington	Peter Madonia	Matthew Ryan
Robert Laurino	David E. Meyer	Patricia Sanders
Robert Leopold	Leon Morton	Theresa C. Thompson

Chairpersons of Standing Committees

Audit	Gary Russikoff, CPA
Buildings and Property	Kenneth Sauter, Esq.
Development	Stephen Falanga
Finance and Budget	Benjamin J. Proce, CPA
Investment	Bradford Huntington
Nominating	Bruce Bird, Ph.D.
Personnel	Robert Laurino
Quality Assurance	John O’Brien

Advisory Board

Stuart P. Applebaum	Michael J. Franchino, CPA	Kenneth Sauter, Esq.
Ed Bergeron	Mark Gerson	John Schettine (Self Advocate)
Michael Bernstein	Thomas Giblin	William Sumas
Lorraine Coppola	Alvin Hersh, Esq.	Maryanne Vindici
John Daudt	Angela McCaffrey	Scott White
Caitlin E. DiRuggiero	The Hon. John McKeon	Paul Wirth, CPA
Judy Elbaum	Theresa Roberts	Lisa Wolfe

Executive Management

Linda C. Lucas	Chief Executive Officer
Kathleen Hinnigan-Cohen	Chief Operating Officer
Minnelly Cummings	Chief Financial Officer
Heather Comstock	Senior Director, Development & Communication
Erin Koropsak	Senior Director, Quality Improvement & Consumer Supports



123 Naylor Avenue
Livingston, NJ 07039
(973) 535-1181
www.arcessex.org

Follow us on social media!